



# MAVIC 2 ENTERPRISE

BUILT TO EMPOWER. DESTINED TO SERVE.



## A REVOLUTIONARY PLATFORM FOR EVERYDAY WORKERS

Designed to empower a new generation of workers, the Mavic 2 Enterprise is the ultimate expression of a tool that delivers beyond expectation to meet current workplace challenges and future demands.



Zoom Camera



Dual Camera



OcuSync 2.0



Modular Accessories



Password Protection



DJI AirSense



## MAVIC 2 ENTERPRISE DUAL

Visible and Thermal Imagery

Integrated Radiometric FLIR Thermal Sensor ·

Adjustable Parameters for Emissivity & Reflective Surfaces ·

Multiple Display Modes: FLIR MSX®, Infrared & Visible ·



## MAVIC 2 ENTERPRISE

Powerful Zoom Capability

· 12 MP 1/2.3" CMOS Sensor

· Dynamic Zoom: 2x Optical 3x Digital Zoom Capability

· Post Analysis Metadata: GPS Timestamping

## DO MORE ACROSS A RANGE OF APPLICATIONS



### FIREFIGHTING

Fight fires and save lives with greater ease and mobility across your site.



### SEARCH AND RESCUE

Locate missing people and tactically respond in emergency situations.



### LAW ENFORCEMENT

De-escalate conflicts in emergency situations to maintain public safety and safeguard response teams.



### POWERLINE INSPECTION

Safely conduct inspections on critical infrastructure, expediting routine maintenance tasks.



### CELL TOWER INSPECTION

Perform inspections with added safety and enhanced efficiency.



### BRIDGE INSPECTION

See the bigger picture in complex structures without getting too close to the asset.

## LEAD WITHOUT LIMITS. WORK BEYOND YOUR BOUNDARIES.

Unlock the possibilities of flight with an extended port that allows you to connect additional devices onto the drone, helping you perform at your best in a variety of daily and critical missions.



### M2E SPOTLIGHT

Direct lost persons with greater ease using a dual spotlight that enhances your vision in low-light areas.



### M2E SPEAKER

Communicate with ground teams during emergency situations, effectively guiding pilots and workers across the operation.



### M2E BEACON

Conduct night missions with absolute safety, allowing other pilots to easily spot you from a distance while you're operating on site.

## REFINED IMAGING FOR TACTICAL & PRACTICAL USE.

The imaging system has been developed with two goals in mind; assisting pilots in close-range missions; and ensuring captured data is more relevant and trusted than ever.



## UNDERSTAND & UTILIZE THE POWER OF YOUR DATA

Visualize scenarios in real time, monitor and measure objects on site more safely and efficiently so you can make the most informed decisions.



### FLIR MSX

Combine visible and thermal imagery in real time



### SPOT METER

Monitor and measure temperatures



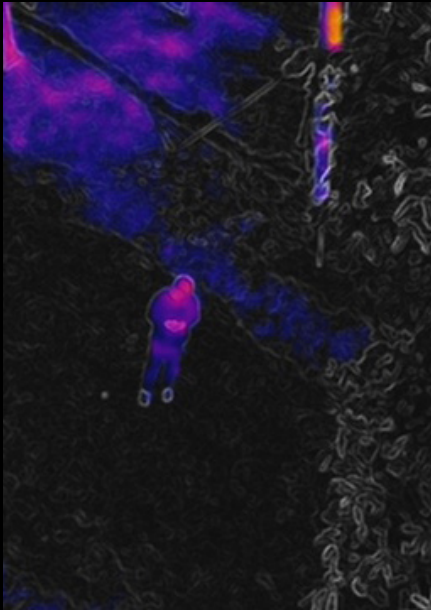
### AREA MEASUREMENT

Oversee temperature measurements on specific areas



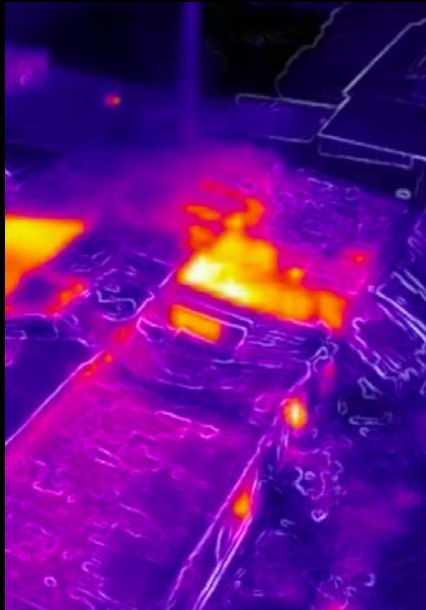
## OPERATE WITH CLARITY AND ENHANCED VISION

For enhanced image visibility on all your captured data, Isotherm helps you get accurate heat measurements on a variety of objects and scenarios.



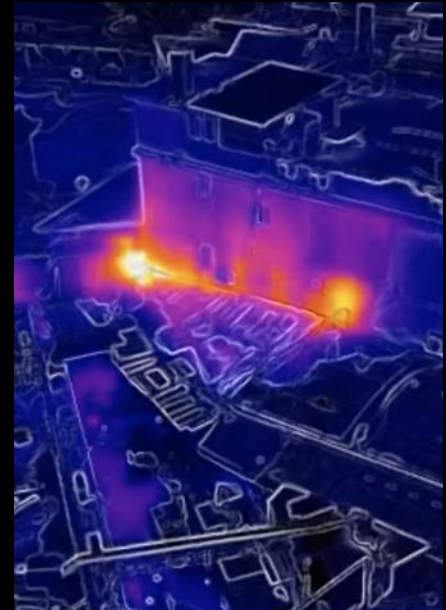
### SEARCH PEOPLE

Enhance image visibility for on-the-ground team missions



### SEARCH FIRE

Enhance image visibility for improved situational awareness



### CUSTOMIZE

Create predefined isotherm settings

## REFINED IMAGING FOR TACTICAL & PRACTICAL USE.

The imaging system has been developed with two goals in mind; assisting pilots in close-range missions; and ensuring captured data is more relevant and trusted than ever.



### Zoom In. Zoom Out.

Stay close to the action – but away from the danger. The Mavic 2 Enterprise is equipped with a 2x optical zoom camera that lets you operate in close range missions without putting yourself in harm's way.

**2x**

Optical  
Zoom

**3x**

Digital  
Zoom

**4K / 30p**

Video Recording  
at 30 fps

**1 / 2.3"**

12 Megapixel  
CMOS Sensor



### Data You Can Trust.

Like your iOS or Android device, GPS timestamping records the time and date that images are taken, so you can leverage data for industry level applications where accuracy is essential and timing is vital.



## IN-BUILT CONTROLS AT YOUR COMMAND.

Fly with confidence using a range of advanced controls that are sophisticated in design and refined to give you the ultimate flying experience – every time you take off.



### Less Interference. Enhanced Transmission.

Experience sheer flying performance with OcuSync 2.0, which supports automatic dual frequency band switching. This ensures a more reliable and stable flight, and enhanced video transmission of up to 8 km at 1080p resolution.



### Move with Grace.

Swiftly maneuver through complex environments with a powerful propulsion system that boasts minimal sound, and offers extended flight time of up to 31 minutes and a maximum speed of 72 kph.



### More Room for Your Missions.

With a 24 GB internal storage, you can now store a lot more data for your missions, allowing you to get more done without the constant need of transferring images manually over SD card.



### Average Flight Time with Each Accessory

Mavic 2 Enterprise + M2E Spotlight = 25 min

Mavic 2 Enterprise + M2E Beacon = 25 min

Mavic 2 Enterprise + M2E Speaker = 25 min

EVERYWHERE YOU GO. THE POWER IS ALWAYS WITH YOU.

Slim enough to carry anywhere and engineered to handle any task – whenever duty calls.



**Foldable. Compact. Portable.**

At 905 g the Mavic 2 Enterprise is rapidly foldable and swiftly slides in the side of your belt package, giving you instant power that's easily accessible and transportable – wherever you operate.



**Self-Heating Batteries for Adverse Environments.**

Stay powered on in demanding climates with a suite of smart self-heating batteries that are capable of working in sub-zero temperatures.



## YOUR IN-FLIGHT SAFETY. OUR TOP PRIORITY.

From take-off to landing, we've refined the way you interact with your drone and the environment, ensuring you have a safe and productive flight at all times.



### Your Aircraft and Data. Under Your Control.

Simply enter your password to get access to your device and all of its features and functions. This intuitive way of logging in to your device ensures secure access to your drone, thus preventing leakage of sensitive information.



### Always in the Know of Your Immediate Airspace.

Avoid hazards in the sky with DJI AirSense, which enhances your airspace safety by giving you instant real-time positioning alerts on nearby manned aircraft.



### Fly Safer Than Ever.

Experience an unrivaled flight with omnidirectional obstacle sensing. This advanced sensing system enables you to fly and hover with more stability than ever in a wide range of open and complex environments.



### Sense and Avoid with Ease.

The Advanced Pilot Assistance System intuitively detects objects near your drone's every move, letting you easily fly around or over obstacles, particularly in tight spaces.

## PROFESSIONAL FLIGHT CONTROL & APP COMPATIBILITY

### DJI PILOT

DJI Pilot is a robust Android and iOS app developed specifically for enterprise users to unleash the power of their DJI drones. With development made specifically for the Mavic 2 Enterprise, DJI Pilot optimizes your flight capability for peak performance.



#### Direct Flight Control

Access camera and accessory settings, intelligent flight modes and more with a single touch.

#### Conduct Automated Flights

Perform repeatable data collection missions and conduct them automatically.

DJI Pilot is available to download on Google Play or the App Store for iOS.



## DJI FlightHub

DJI FlightHub is a one-stop solution for managing your drone operations, supporting large organizations to effectively scale their aerial operations. Compatible with the Mavic 2 Enterprise, you can integrate FlightHub directly into your existing fleet of DJI drones and leverage its aerial intel across your organization.



### Live Operations

Enhance project coordination with real-time information from remote drone operations.

### Flight Data

Improve operations management and ensure regulatory compliance with easy flight log recording.

### Fleets & Pilots

Increase team efficiency and communication by organizing your teams and records around projects.

You can learn more at [www.dji.com/flighthub](http://www.dji.com/flighthub)

## MOBILE SDK

The DJI Mobile SDK is a software development kit designed to give developers access to the full capabilities of DJI's aircraft through a connected mobile device. The SDK simplifies the application development process by taking care of lower level functionality such as flight stabilization, battery management and more, so developers can focus their efforts on more defined functions to create an application that meets their industry-specific needs.



### Existing Mobile SDK Activations

Leading companies and developers are bringing ground-breaking solutions to the industry using Mobile SDK.

**3, 000, 000+**

Installations of MSDK Apps

**500+**

Completed MSDK Apps

## DJI ENTERPRISE SHIELD

### Comprehensive Protection for Your Fleet

Get covered with DJI's Enterprise Shield – a drone protection service plan exclusively created for DJI's commercial drone operators. Tailored to give pilots peace of mind on every single flight, Enterprise Shield can cover a broad range of repairs and provide rapid replacement units so your fleet is always online.



ENTERPRISE SHIELD

### Purchase Enterprise Shield

To purchase Enterprise Shield for your Mavic 2 Enterprise, you can contact your local enterprise distributor or send an email to [na.enterprise@dji.com](mailto:na.enterprise@dji.com).

## SPECIFICATIONS

|                       |                                      |   |                            |                             |
|-----------------------|--------------------------------------|---|----------------------------|-----------------------------|
| <b>Aircraft</b>       | Takeoff Weight (without accessories) | Zoom Edition : 905 g ; Dual Edition : 899 g   |                            |                             |
|                       | Dimensions                           | Folded: 214×91×84 mm; Unfolded: 322×242×84 mm   |                            |                             |
|                       | Diagonal Length                      | 354 mm  |                            |                             |
|                       | Max Flight Time (no wind)            | 31 minutes (at a constant speed of 25 kph)  |                            |                             |
|                       | Max Hovering Time (no wind)          | 29 min<br>Turn on the Beacon: 27 min; Turn off the beacon: 28 min<br>Turn on the Spotlight: 22 min; Turn off the Spotlight: 26 min<br>Turn on the Speaker: 22 min; Turn off the Speaker: 26 min   |                            |                             |
|                       | Internal Storage                     | 24 GB   |                            |                             |
| <b>Sensing System</b> | Sensing System                       | Omnidirectional Obstacle Sensing  |                            |                             |
|                       | Operating Environment                | Forward, Backward and Sides: Surface with clear pattern and adequate lighting (lux > 15)<br>Upward: Detects diffuse reflection surfaces (>20%) (walls, trees, people, etc.)<br>Downward: Surface with clear pattern and adequate lighting (lux > 15)<br>Detects diffuse reflection surfaces (>20%) (walls, trees, people, etc.) |                            |                             |
| <b>Camera</b>         | Camera Type                          | M2ED Thermal Camera   | M2ED Visual Camera         | M2E Camera                  |
|                       | Sensor                               | FLIR Thermal Sensor   | 1/2.3" CMOS, 12 Megapixels |                             |
|                       | FOV                                  | 57°   | approx. 85°                | 82.6°(24mm) : 47.8°(48 mm)  |
|                       | Format equivalent                    | -   | 24 mm                      | 24-48 mm                    |
|                       | Aperture                             | Aperture: f/1.1   | f/2.8                      | f/2.8(24 mm) -f/3.8 (48 mm) |
|                       | Auto focus at                        | -   | 0.5 m - ∞                  | 0.5 m - ∞                   |

|                   |                                       |   |                           |
|-------------------|---------------------------------------|---|---------------------------|
| Accessories       | M2E Spotlight                         | M2E Beacon                                    | M2E Speaker               |
| Dimensions        | 68x60x41 mm                           | 66x40x27.8 mm                                 | 68x55x65 mm               |
| Weight            | 58 g                                  | 24 g  | 61 g                      |
| Port Type         | USB Micro-B                           | USB Micro-B                                   | USB Micro-B               |
| Operating Range   | 30 m                                  | 5000 m  | -                         |
| Power             | Max. 26W                              | Avg. 1.6W                                     | Max.10W                   |
| Illuminance       | FOV17°<br>Max : 11lux @ 30 m Straight | Min Angle : 55 cd<br>Light intensity : 157 cd | -                         |
| Decibel           | -                                     | -   | 100 dB (1 meter distance) |
| Max Voice Bitrate | -                                     | -   | 16kbps                    |

### Order a Mavic 2 Enterprise Today

The Mavic 2 Enterprise will be available for pre-order from official DJI Enterprise dealers. For more information about the Mavic 2 Enterprise, please visit [www.dji.com/mavic-2-enterprise](http://www.dji.com/mavic-2-enterprise)

### About DJI Enterprise

DJI Enterprise is a global team dedicated to developing world class drone solutions for a new generation of work. These solutions help businesses across the agricultural, infrastructure, public safety sectors and more to empower workers, enhance jobs and digitize operations.



Available in Australia From:  
**Southern Cross Drones Pty Ltd**

101 Miller Street, L32  
North Sydney, NSW 2060, Australia  
T: +61 2 9953 8366  
E: [info@southerncrossdrones.com](mailto:info@southerncrossdrones.com)  
W: [www.southerncrossdrones.com](http://www.southerncrossdrones.com)

[www.dji.com](http://www.dji.com)

Follow us @DJIEnterprise

